

The Lexington



{ Cottage - Stone to Grade }



{ Craftsman - Stone to Grade }



{ Eastern Seaboard - Full Brick, Full Porch }



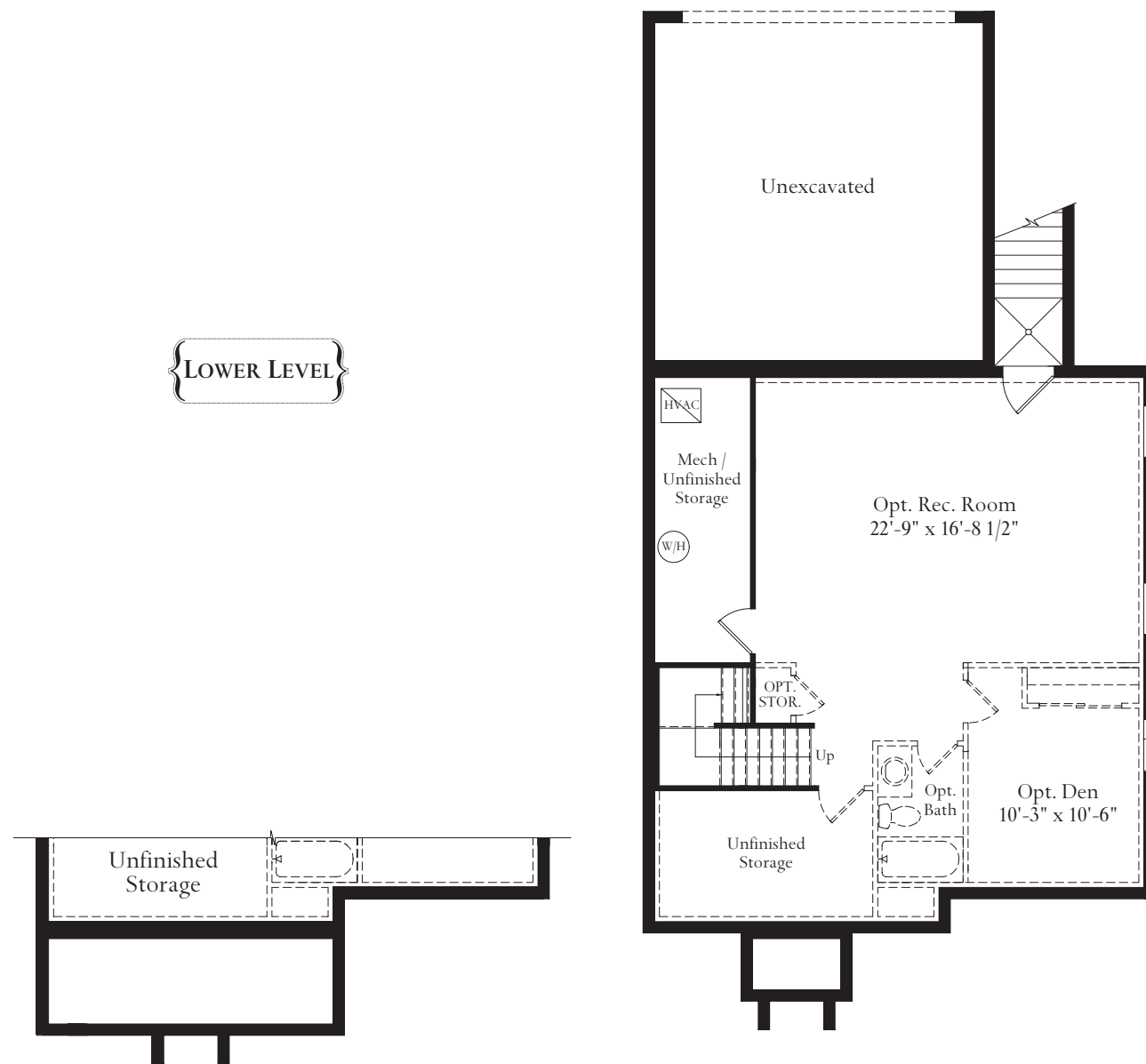
{ Eastern Seaboard - Portico - Stone to Grade }



{ Eastern Seaboard - Stone Water Table }



{ Farmhouse - Stone to Grade }



Opt. Full Porch

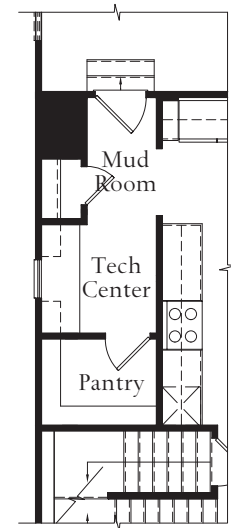
The Lexington is open and spacious with a design that has your family in mind. From the front door to the Family Foyer, the Main Level is completely open, allowing family gatherings to flow easily from one space to the next with ease. The Great Room and Dining Area, open to the expansive kitchen will delight the entertainer in your family. Hardwood Flooring is included on the Main Level in the Foyer, Great Room, Kitchen, and Dining Area. The oversized island can easily seat up to 6 people for casual dining or homework time, perfect for the busy family. The Family Foyer entrance from the attached garage includes a large Mud Room and Pantry and also offers two Optional configurations for a Tech Center or Laundry Room on the main floor. Upstairs The Master Bedroom and Bath and 3 generous sized additional Bedrooms are joined by a hall bath, loft area and laundry area. Each home includes a Walk Up or Walk Out Exit from the Lower Level, depending on the Home Site. The Lower Level includes Options for finishing a Rec Room, Bath and Den. This home starts at 2318 sq. ft.

ATLANTIC BUILDERS
EXPERIENCE THE DIFFERENCE

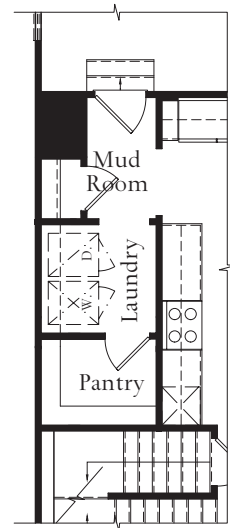


ATLANTIC BUILDERS
EXPERIENCE THE DIFFERENCE

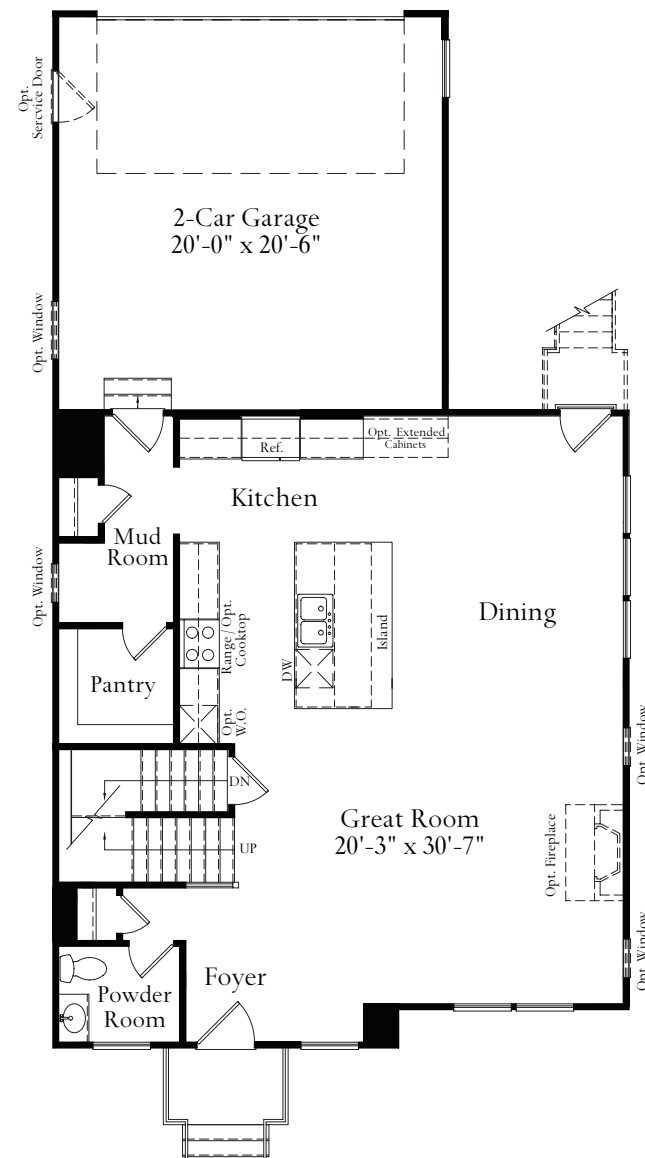
The Lexington



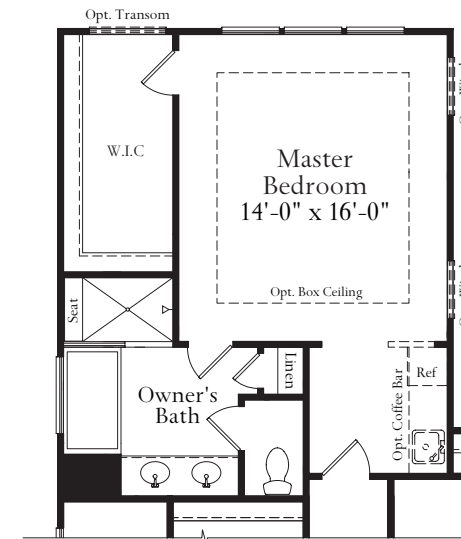
Partial main level with opt. Tech Center



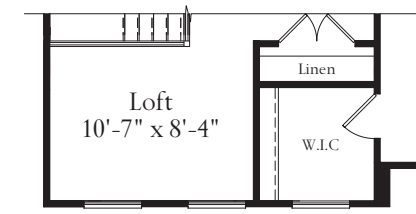
Partial main level with opt. Laundry



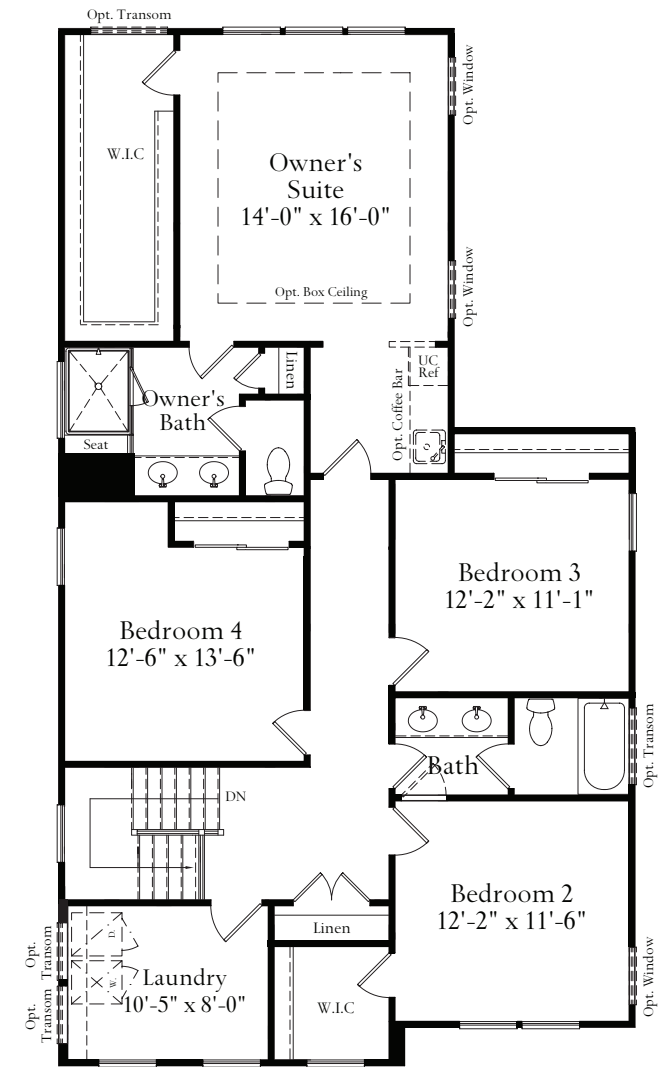
MAIN LEVEL



Partial upper level with opt. Owner's Luxury Bath



Partial upper level with opt. Loft / Homework



UPPER LEVEL

These renderings and floorplans are conceptual only. Actual details may vary. This insert is for illustrative purposes only. Atlantic Builders' continuing research and development program means specifications and plans are subject to change without notice. Standard features vary per community. Please consult Community Sales Manager for details.